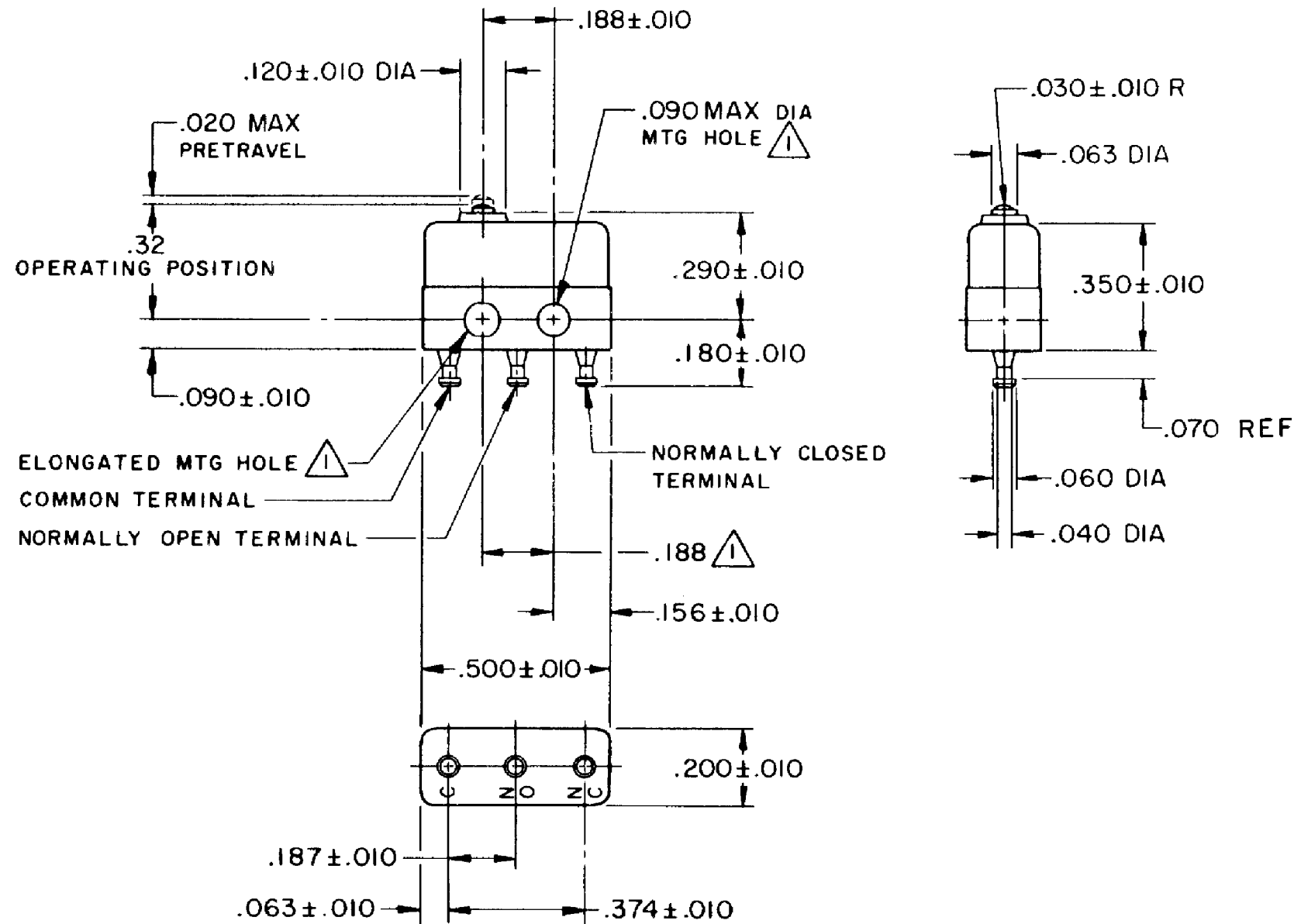
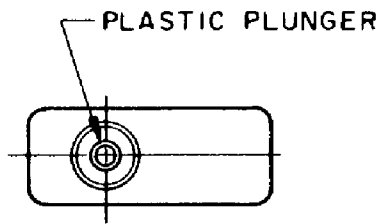


HONEYWELL PART NUMBER
12SX2-T
PRODUCT CODE VDK1050

REV	DOCUMENT	CHANGED BY	CHECK
11	0038448	VS 28APR08	BLR



NOTES

- 1 MOUNTING HOLES WILL ACCEPT PINS OR SCREWS OF .087 MAX DIA ON .188 ± .002 CENTERS
- 2 - TERMINALS ARE SOLDER DIPPED WITH RoHS-COMPLIANT TIN/COPPER/SILVER SOLDER.
- 3 - SWITCH WILL WITHSTAND TEMPERATURE OF 250° F
- 4 - MOVABLE CONTACT MATERIAL - 24K SOLID GOLD
- 5 - STATIONARY CONTACT MATERIAL - GOLD ALLOY

RELEASE NO.	PR-1257-T
REPLACES	

CHARACTERISTICS	
OPERATING FORCE	2.5-5 OZ
RELEASE FORCE	1 OZ MIN
DIFFERENTIAL TRAVEL	.002 MAX
OVERTRAVEL	.004 MIN

ELECTRICAL DATA		
CONTACT ARRANGEMENT SPDT		
30 VOLTS DC RATING		
	SEA LEVEL	50,000 FT
INDUCTIVE	0.5 AMP	0.5 AMP
RESISTIVE	1 AMP	1 AMP
MAXIMUM INRUSH 2 AMP		
APPROVALS	KEMA, CE	1A 250 V - T125 25E3
	UL, CSA	1A 125 VAC

DESIGN UNITS: INCH
TOLERANCES UNLESS NOTED:
NO PLACE X ±
ONE PLACE .X ±
TWO PLACE .XX ±
THREE PLACE .XXX ±
FOUR PLACE .XXXX ±
ANGLES ±
THIRD ANGLE PROJECTION

DRAWN	SPK	13FEB08
CHECK	RJ	13FEB08
THIS DRAWING COVERS A PROPRIETARY ITEM AND IS THE PROPERTY OF HONEYWELL. THIS DRAWING IS NOT TO BE COPIED OR USED WITHOUT THE PERMISSION OF HONEYWELL.		
INTERPRET PER ANSI Y14.5M-1982 OTHER HONEYWELL ENGINEERING STANDARDS MAY APPLY		

Honeywell			
TITLE SWITCH - BASIC			
SIZE	TYPE	DRAWING NAME	REV
B	I	12SX2-T	11

RASTER	SCALE -	WEIGHT: .003 LB MAX	SHEET 1 OF 1
--------	---------	---------------------	--------------